

2020 ANNUAL REPORT



Shared Harvest
FOODBANK

MEMBER OF

FEEDING
AMERICA



A LETTER FROM OUR DIRECTOR

We began the year 2020 with an ambitious goal to illuminate the plight of people living in poverty. Our hope was to cultivate understanding and compassion by illustrating its root causes. However, the pandemic exposed the vulnerabilities and fragility of our economy, front and center on a global stage and forced many to live in conditions that others experience daily.

I am especially grateful for the perseverance of our staff, partner agencies, Ohio Army National Guard, and the extraordinary support from the community over this past year. The images of sorrow and heroism from 2020 will forever be etched in my mind. The National Guard loading thousands of cars with food. The elderly, encapsulated in the safety of their vehicle, carpooling with friends through the mass food distributions. Children bouncing around the back seat, waving as they passed by. The synchronized motioning of the Guard as they signaled for the next round of cars. The blocked intersections and police directing traffic. The shame and embarrassment on the man's face who lost his job, afraid of being seen by someone he knew, angry for having to ask for help, but grateful to receive it. The panic of the young couple who waited for their SNAP benefits to be renewed only to find empty shelves at the grocery store. Our partner agencies who made substantial changes to how they operate to keep providing food, uninhibited. And so many more...

We were inspired by the many expressions of love from the community, manifested in the most beautiful and thoughtful ways. Each handwritten note, surprise call from a donor, and new organization interested in partnering with us were driving forces that empowered us to distribute quantities of food, far greater than we have ever experienced.

As we prepare for the "benefits cliff" when temporary government provisions run out over the next few months, I hope you will join us again on the frontlines to continue the fight against hunger. It is with the strength of our collective efforts that we are able to advance lasting change. It all begins with a decision to make a difference and is as simple as providing - one meal at a time.

If we have learned anything over this past year, it is that we are better: together. Thank you for standing with us at a time when you were needed most.

Affectionately,


Terry Perdue

WHERE WE ARE NOW

It is with the strength of our collective efforts that we are able to advance lasting change.

NATIONAL GUARD & MASS DISTRIBUTIONS

➤ BUTLER COUNTY

- ✓ 42 Mass Distributions
- ✓ 11,205 families served
- ✓ 32,886 people served
- ✓ Highest # served: 1,530 families on 5/02/20

➤ DARKE COUNTY

- ✓ 16 Mass Distributions
- ✓ 6,836 families served
- ✓ 19,895 people served
- ✓ Highest # served: 742 families on 4/22/20

➤ MIAMI COUNTY

- ✓ 13 Mass Distributions
- ✓ 7,644 families served
- ✓ 22,856 people served
- ✓ Highest # served: 1,270 families on 4/25/20

➤ PREBLE COUNTY

- ✓ 12 Mass Distributions
- ✓ 3,958 families served
- ✓ 11,384 people served
- ✓ Highest # served: 618 families on 5/09/20

➤ WARREN COUNTY

- ✓ 5 Mass Distributions
- ✓ 656 families served
- ✓ 2,349 people served
- ✓ Highest # served: 401 families on 12/19/20



30,299 FAMILIES SERVED
PEOPLE SERVED **89,370**



National Guard

Packed **1,502,255**
pounds of food &
served **11,151** hours.

In 2020, Foodbanks across the country had to adapt how food was distributed to meet a growing need. In addition to all of the amazing work our entire network of hunger relief charitable organization did, Shared Harvest Foodbank also provided direct distributions to families. None of which wouldn't have been made possible without the help of the National Guard or our sponsors

FOODBANKING: LIST OF OUR 2020 PARTNERS

BUTLER COUNTY

ALLISON AVENUE BAPTIST
ANIMAL FRIENDS SOCIETY
BETHEL AME
CENTRAL OHIO
PENTECOSTAL YOUTH CAMP
CHRISTIAN FAMILY CENTER
CINCINNATI CHILDREN'S HOSPITAL MEDICAL CENTER
EDGEWOOD MINISTERIAL ASSOCIATION
ENCOUNTER LIFE CHURCH *NEW*
FAIRFIELD CHURCH OF GOD
FAIRFIELD FOOD PANTRY
FAITH COMMUNITY UNITED METHODIST CHURCH
FAMILY SERVICE OF MIDDLETOWN
FEED THE HUNGRY PROJECT
FELLOWSHIP CHRISTIAN CENTER
FIRST CHURCH OF GOD MONROE
FULL GOSPEL OUTREACH
GRACE POINTE CHURCH
HAMILTON DREAM CENTER
HOLDING HANDS C.D.C
HOPE HOUSE RESCUE MISSION INC.
ISLAMIC EDUCATIONAL COUNCIL
JEE FOODS *NEW*
JOSEPH'S LEGACY
KINGS TABLE
LIGHTHOUSE FELLOWSHIP PANTRY
LOVE CHAMBERS
MARSHALL HIGH SCHOOL
NEW LIFE BAPTIST MISSION
OAKS COMMUNITY CHURCH
OPEN DOOR PANTRY
POASTTOWN FIRST CHURCH OF GOD
PRINCETON PIKE CHURCH OF GOD PANTRY
PRINCETON PIKE CHURCH OF GOD-WEST PANTRY
PROGRESSIVE ANIMAL WELFARE SERVICES (PAWS) *NEW*
REACH OUT LAKOTA *NEW*
SALVATION ARMY HAMILTON
SALVATION ARMY MIDDLETOWN
SERVE CITY
ST VINCENT DE PAUL OF MIDDLETOWN
TALAWANDA OXFORD PANTRY AND SOCIAL SERVICES
TOWNE BLVD. CHURCH OF GOD
UNLIMITED GRACE PRAYER MINISTRY
VILLAGE FOOD PANTRY
WESTSIDE BAPTIST CHURCH DAYCARE

DARKE COUNTY

GOOD SAMARITAN HOME
GRACE RESURRECTION COMMUNITY CENTER
MIAMI VALLEY COMMUNITY ACTION
PARTNERSHIP *NEW*
RADIANT CHURCH *NEW*

MIAMI COUNTY

BETHANY CENTER
COMMUNITY GRACE BRETHREN CHURCH
DREAM BUILDERS GROUP INC.
FAMILY ABUSE SHELTER OF MIAMI CO.
FIRST PLACE FOOD PANTRY
GREENE STREET UMC *NEW*
HEALTH PARTNERS FREE CLINIC
HIGHLAND BIC CHURCH
NEEDY BASKET OF SO. MIAMI CO.
NEW PATH INC.
SAFEHAVEN
STONEBRIDGE COMMUNITY CHURCH

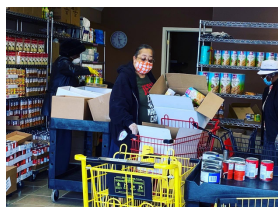
PREBLE COUNTY

HIGHER HEIGHTS CHURCH OF GOD
MIAMI VALLEY COMMUNITY ACTION PARTNERSHIP
MONROE TOWNSHIP FOOD BANK
NEW PARIS COMMUNITY FOOD PANTRY
WEST ALEXANDRIA FOOD BANK

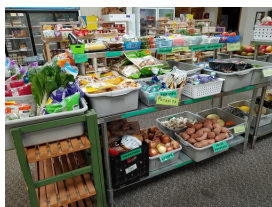
WARREN COUNTY

BERNIE'S PLACE
CITYGATE CHURCH *NEW*
FATHER SCHUH CENTER *NEW*
FRANKLIN AREA COMMUNITY SERVICES
HERKIN'S HOUSE
KINGS LOCAL PANTRY
LEBANON FOOD PANTRY
LITTLE MIAMI FOOD SERVICE INC.
MASON FOOD PANTRY
SPRINGBORO COMMUNITY ASSISTANCE CENTER
URBANCREST BAPTIST CHURCH

Village Food Pantry



First Place Food Pantry

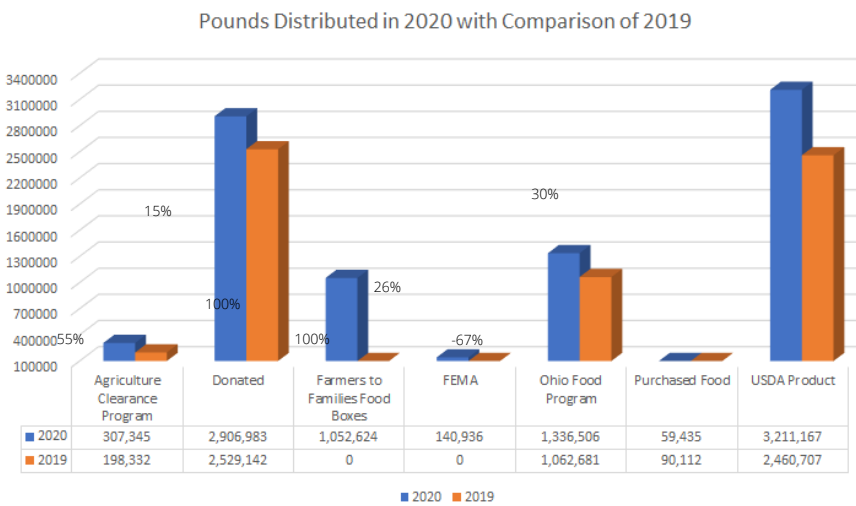


Reach Out Lakota



Many thanks to **ALL of our partners in 2020**, who stepped up above and beyond during a once in a lifetime global pandemic

FOODBANKING: POUNDS DISTRIBUTED & PEOPLE SERVED



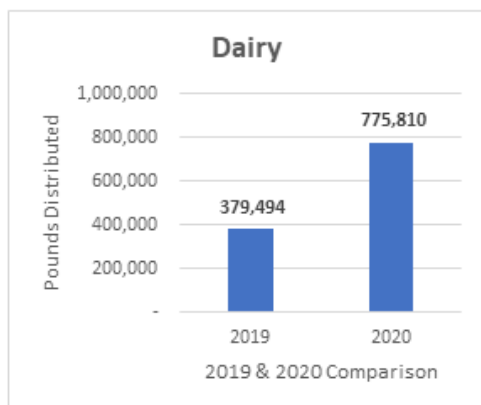
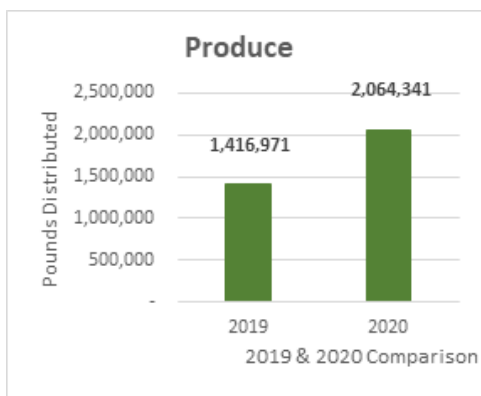
In 2020, our network distributed over 42% more pounds than 2019.

	Pantry Totals		Soup Kitchen/ Shelter		Congregate	
	Families	People	People	Meals	People	Meals
Butler	123,530	423,200	11,724	231,228	447	12,968
Darke	11,744	39,399	926	74,168	605	1,874
Miami	33,947	121,597	297	20,959	3,226	9,479
Preble	7,169	22,608	0	0	0	0
Warren	23,728	82,992	106	13,274	91	13,945
	200,118	689,795	13,052	339,629	4,369	38,266

In 2020, our network served 200,118 families comprised of 689,795 people. Compared to 103,482 families and 304,297 people served during the same period in 2019.

FOODBANKING: A MOVE TO FRESH FOODS

In 2020, we increased our commitment not just to fill empty cupboards but provide more fresh and nutritious foods. Our network distributed **46% more fresh produce** and **105% more dairy**



DIRECT SERVICE



2020
 21,289 Indirect Contacts
 13,458 SNAP Materials Distributed
 1,641 Pre-Screened
 1,173 SNAP Applications

2019
 31,095 Indirect Contacts
 7,509 SNAP Materials Distributed
 2,364 Pre-Screened
 1,515 SNAP Applications



2020
 11,585 BUTLER
 1,794 DARKE
 2,884 MIAMI
 1,523 PREBLE
3,285 WARREN
 21,071 TOTAL BOXES

**1,756 Monthly Average Number of Participants*

2019
 11,007 BUTLER
 1,894 DARKE
 2,533 MIAMI
 1,670 PREBLE
3,502 WARREN
 20,606 TOTAL BOXES

**1,717 Monthly Average Number of Participants*

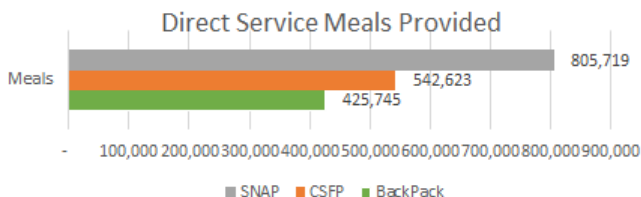
BACKPACK PROGRAM

2020 Oct-Dec
 12,625 BUTLER
 5,899 DARKE
 308 MIAMI
 1,105 PREBLE
10,576 WARREN
 30,513 TOTAL BAGS

**3,390 average # of students served per WEEK*

2019 Oct-Dec
 12,008 BUTLER
 6,346 DARKE
 175 MIAMI
 0 PREBLE
10,514 WARREN
 29,043 TOTAL BAGS

**3,227 average # of students served per WEEK*



BACKPACK PARTNERS

BUTLER COUNTY HEADSTART (BUTLER & PREBLE)
 BUTLER COUNTY SUCCESS (BUTLER)
 EDGEWOOD MINISTERIAL ASSOCIATION BACKPACK (BUTLER)
 ST VINCENT DE PAUL (BUTLER)
 ST. MARY OF OXFORD (BUTLER)
 TED & BECKY RICHARDS (BUTLER)
 GRCC BACKPACK (DARKE)
 COVE SPRING CHURCH (MIAMI)
 TIPP CITY CHURCH OF THE NAZARENE (MIAMI)
 JOSHUA'S PLACE (WARREN)
 KINDNESS BACKPACK (WARREN)
 LEBANON WARRIOR BACKPACK (WARREN)
 LITTLE MIAMI PANTHER BACKPACK (WARREN)
 SCAC BACKPACK (WARREN)

CSFP PARTNERS

COMMUNITY FIRST SOLUTIONS (BUTLER)
 OXFORD FAMILY RESOURCE CENTER (BUTLER)
 OXFORD SENIOR CITIZENS (BUTLER)
 MIAMI VALLEY COMMUNITY ACTION PARTNERSHIP (DARKE)
 NEW PATH INC. (MIAMI)
 STAUNTON COMMONS APARTMENTS (MIAMI)
 TERRACE RIDGE APTS (MIAMI)
 MIAMI VALLEY COMMUNITY ACTION PARTNERSHIP (PREBLE)
 FRANKLIN AREA COMMUNITY SERVICES (WARREN)
 KINGS LOCAL PANTRY (WARREN)
 WARREN COUNTY COMMUNITY SERVICES (WARREN)

MEET THE TEAM

SHARED HARVEST STAFF

Terry Perdue: Executive Director
Victoria Harris: Administrative Assistant
Darrell Sandlin: Director of Operations
Rachael Copple: Distribution Center & Volunteer Manager
Joshua Lewis: Driver/DC Associate
Elizabeth Smith: Driver/DC Associate
Mike Stamper: Driver/DC Associate
Sandra McCauley: Fiance Manager
Sarah Ormbrek: Marketing Specialist
Nikki Jennings: Partner Relationship Manager
Robert Zohfeld: Programs (Direct Service) Manager
Samantha Durko: Senior Food Program Coordinator
Peter Engelhard: Programs Coordinator
Amberlee Finkes Supply Chain Manager

BOARD OF DIRECTORS

Terri Coffey *The Kroger Co*
Bryan Cooper *Woodforest National Bank*
Gary Cornett (Chair) *Community Volunteer*
Mike Harkrader *Retired, Dickerson Distributing*
Debbie Jones *Community Volunteer*
Eric Knapke *Kroger*
Patricia Plavko (Sec Treas) *Frost Brown Todd LLC*
Mike Sullivan *Retired, Meijer*
Russ White (Vice Chair) *Retired, Frito Lay*
Steve Woody *Retired, Kroger*



While not staff, the men and women of the Ohio National Guard were an important part of our team in 2020



GIVING: IN KIND DONORS

FOOD DONORS

80 ACRES	KOTTKE TRUCKING
ALDI	KRAFT
AMAZON	KROGER
AMERICAN FREIGHT CORPORATION	MEIJER
AMERICOLD WAREHOUSE	MONDELEZ INTERNATIONAL
AUVIL FRUIT	NEMCO
BREAD OF LIFE	OHIO ASSOCIATION OF FOODBANKS
BUY BUY BABY	OHIO DEPT. OF JOB & FAMILY SERVICES
CAMPBELL'S	OHIO FARM BUREAU FEDERATION
CHAVIN TRANSPORT	OLD DOMINION FREIGHT LINE, INC.
CHICK PEAS CHICK	P.A.W.S. ADOPTION CENTER
CHUBBY BUNNY BAKERY	PILGRIMS PRIDE
CLASSIC CARRIERS	PILOT CHEMICAL COMPANY
COCA COLA NORTH AMERICA	POST ATLANTA DC
CONAGRA	PREMIER PRODUCE ONE
CONTINENTAL EXPRESS	PRIME TRANSPORTATION & LOGISTICS
COSTCO	PRODUCT FULFILLMENT CENTER
DHL	RED GOLD
FAIRFIELD HIGH SCHOOL	RICH FOOD
FEDERATION DISTRIBUTION SERVICES	SCHUSTER COMPANY
FRESH SAUSAGE SPECIALIST	SMITHFIELD FOODS
FRITO-LAY COMPANY	SMYRNA
GARVER FAMILY FARM MARKET	SNYDER/LANCE
GENERAL MILLS	STARBUCKS
GIRL SCOUTS OF WESTERN OHIO	SYSCO FOODS
GORDON FOOD SERVICE/RAISING CANE'S	TARGET
GREAT PARKS OF HAMILTON COUNTY	THE WORNICK COMPANY
H. LOGISTICS	TRANS AM
HOMEWOOD SUITES	TROPICANA
INTERROBANG	TYSON
INTERSTATE WAREHOUSING	VENDOR'S SUPPLY OF OHIO
J.A. FOOD SERVICE	VICTORY WHOLESALE GROCERS
J.M. SMUCKER CO.	W.H. CANDY
JAGS	WALMART
KELLOG'S	WEIRS FARMS
KLOSTERMAN BAKERY	WHOLE FOODS
KOHEL INTERSTATE TRANSPORT	YEWANG LLC
	ZENITH LOGISTICS

FOOD DRIVES

AMERICAN TIRE DISTRIBUTERS	HI TEK MANUFACTURING
ART IN MOTION SCHOOL OF DANCE	HUTCHENSON HOMECARE PHARMACY
ATTRICURE	INERTIA MEDICAL
AVEDA SALON	KOHL'S - FOREST PARK
BADIN HIGH SCHOOL	PLUS GROUP OF COMPANIES
BARCLAYS	PRIMROSE SCHOOL OF MASON
BC MHARS BOARD	PRIMROSE SCHOOL OF SOUTH LEBANON
CHILDTIME OF MONROE	QUINN CHAPEL AME CHURCH
CIP RETAIL	RUSTCHIC SUNFLOWER
CONTECH ENGINEERED SOLUTIONS	SPRINGDALE ICE CREAM AND BEVERAGE
CTL AEROSPACE INC.	STEM ACADEMY
DAYSpring MONTESSORI SCHOOL	THE BIRD SHOPPE
FAURECIA	THE LANDINGS AT BECKETT RIDGE
GE AVIATION	APARTMENTS
GOODWILL - SPRINGDALE	THYSSENKRUPP BILSTEIN OF AMERICA



In 2020, Shared Harvest Foodbank's total in kind donations were 9,246,315 lbs which equates to 7,705,263 meals to families in need.

FINANCIALS

Audited Trial Balance

Assets	
Food Inventory	\$ 1,061,114
Cash & Cash Equivalents	\$ 3,071,846
Receivables	\$ 411,833
Investments	\$ 238,627
Property & Equipment, net	\$ 1,282,850
Total Assets	\$ 6,066,270
Liabilities	
Payables	\$ 266,471
Accrued Payroll & Other Expenses	\$ 10,624
Total Liabilities	\$ 277,095
Net Assets	
Unrestricted	\$ 5,311,351
Board Designated	\$ 238,627
Temporarily Restricted	\$ 239,197
Total Net Assets	\$ 5,789,175
Total Liabilities & Net Asset	\$ 6,066,270

Audited Revenue & Expense Statement

Revenue	
Food Donations	\$ 9,246,315
Government Grants	\$ 3,935,136
Member Agency Contract Revenue	\$ 210,795
Contributions	\$ 1,387,929
United Way	\$ 189,727
Net Assets Released from Restriction	\$ 997,264
Miscellaneous	\$ 64,671
Total Revenue	\$ 16,031,837
Expense	
Foodbanking - includes value of food distributed	\$ 12,682,947
Senior Food Program	\$ 760,732
Childhood Food Program	\$ 575,300
SNAP Outreach	\$ 86,867
Advocacy	\$ 10,677
Total Program Expense	\$ 14,116,523
Management & General	\$ 162,569
Food/Fund Development	\$ 50,527
Total Expenses	\$ 14,329,619

2020 was a year of changes for many. A small glimpse at a few of the capital improvements made to not only help meet the pandemic need but to sustain our mission for years to come

new trucks and wrapping



racking in the distribution center



new larger cooler



new forklifts & pallet jacks





5901 Dixie Highway
Fairfield, Ohio 45014-4207
www.sharedharvest.org
513-881-9024

